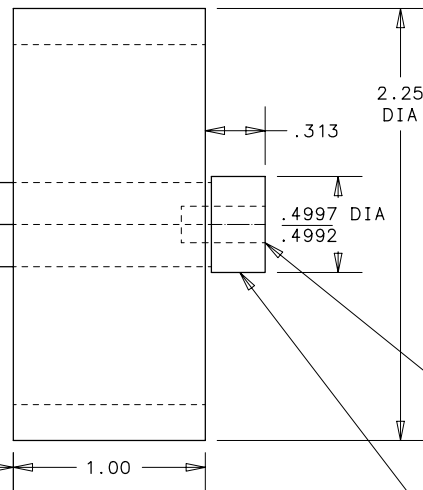
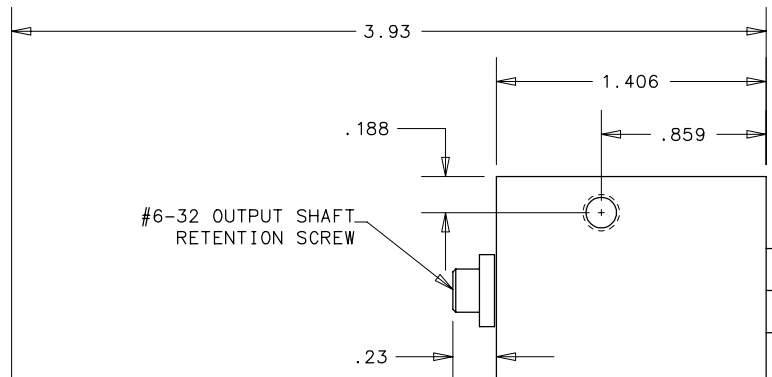


Scale FULL	Dr By TSE	TEAM WHYACHI ROBOTICS	814 E. FIRST AVE. DORCHESTER, WI.	A SIZE	TBOX	OF A	REV. A
Date 12-15-2002	Chk By	TITLE: T-BOX GEARBOX W/ WHEEL		FOR: TITAN MOTOR 11.52:1 RATIO			
THIS DRAWING AND ALL INFORMATION PRESENTED IS THE PROPERTY OF TEAM WHYACHI LLC AND IS STRICTLY CONFIDENTIAL. IT SHALL NOT BE COPIED, REPRODUCED OR REVEALED WITHOUT WRITTEN CONSENT. THIS DRAWING MUST BE RETURNED UPON REQUEST.			TOLERANCE (EXCEPT AS NOTED) .0 — .032 .00 — .015 .000 — .005	QTY.	DESCRIPTION	TWR IDENTIFICATION NO.	



T-BOX GEARBOX SPECS WITH STOCK TITAN MOTOR

RATIO	11.52:1
OUTPUT SPEED	1300 RPM @ 15 IN LBS
TORQUE @ 22A	15 IN LB
STALL TORQUE	60 IN LB
GEARS	3 STAGE
GEARBOX MATERIAL	FORTAL ALUMINUM
BEARINGS	6 BALL BEARINGS
OUTPUT SHAFT	4130 STEEL- REMOVABLE
WHEEL DIA	2.25"
WHEEL MATERIAL	FORTAL ALUMINUM
WHEEL TREAD	MOLDED URETHANE 50 A DUROMETER
MAX SPEED	9 MPH @ 15 IN LBS
TOTAL WEIGHT	1.6 LB MTR, BOX, SHAFT & WHEEL
WHEEL LOADING	18,944 LBS WITH OUTBOARD BRG 633 LBS WITHOUT OUTBOARD BRG

TITAN MOTOR	
STALL CURRENT	85 A
VOLTAGE	14.4 VDC

