

metal and hardware kit

Metal and Hardware:

This kit contains additional structural elements that you can use to build bigger, better, stronger, and more complex robot designs. Or, since bigger isn't always better... use the pieces in this kit to make sure that you always have the most efficient part for the job. All the parts included in this kit were also included in the Starter Kit, so consult your original Inventor's Guide for building tips and examples on how to use them.

INSERT THESE PAGES
at the **back of the**
Structure Chapter in your
Vex Inventor's Guide.

screw, 8-32 x 1/4" x 70



screw, 8-32 x 3/8" x 28



screw, 8-32 x 1/2" x 28



screw, 8-32 x 3/4" x 14



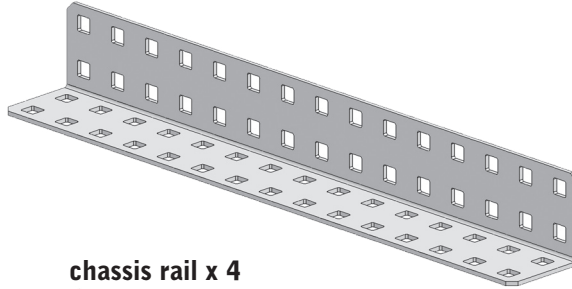
threaded screw
for collar x 16



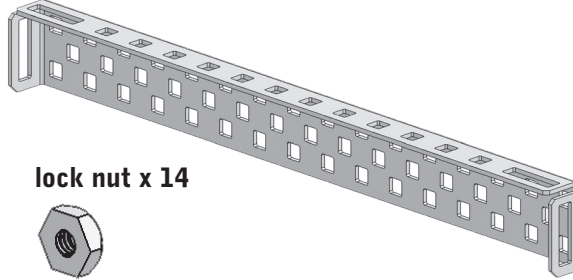
keps nut x 65



chassis bumper x 2



chassis rail x 4



lock nut x 14



collar x 16



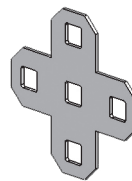
0.182" plastic
spacer x 20



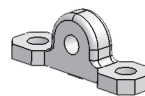
0.318" plastic
spacer x 20



plus gusset x 2



bearing block x 6



bearing flat x 16

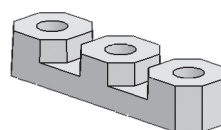
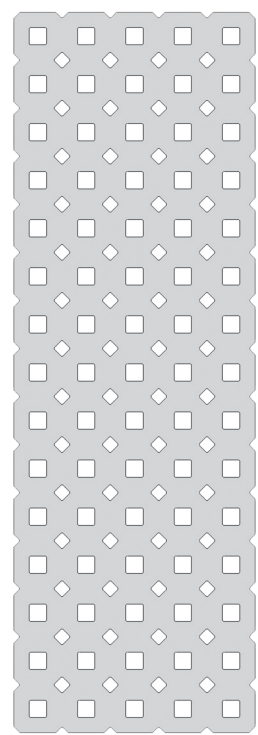


plate x 2



washer, steel x 30



washer, delrin x 10

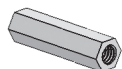


metal and hardware kit, continued

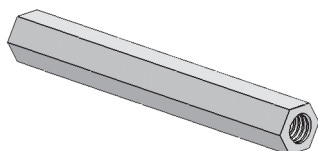
fully threaded beam (1/2") x 10



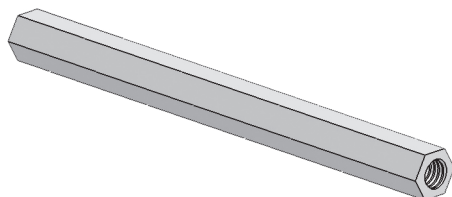
fully threaded beam (1") x 8



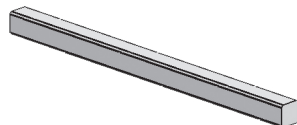
partially threaded beam (2") x 4



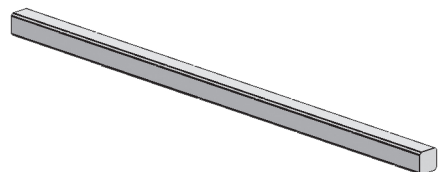
partially threaded beam (3") x 4



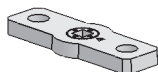
square bar (2") x 4



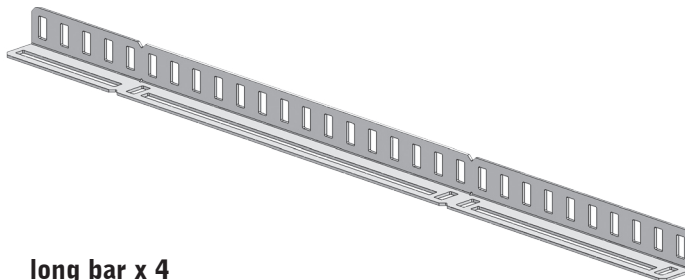
square bar (3") x 4



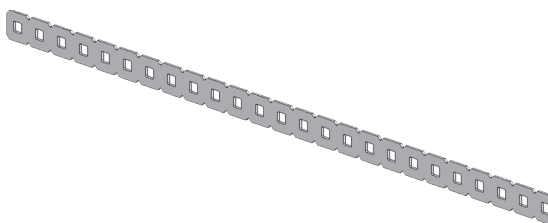
lock plate x 4



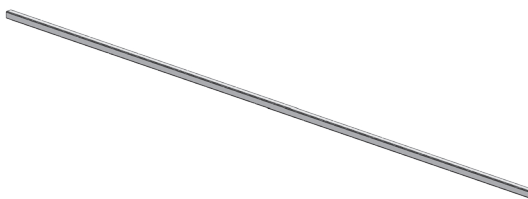
long angle bar x 4



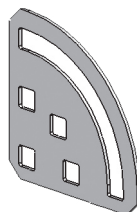
long bar x 4



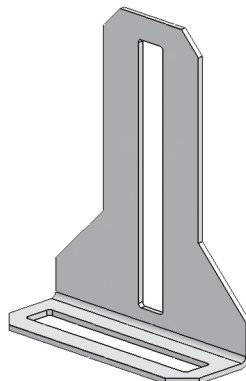
square bar (12") x 2



pivot x 2



gusset x 2



Limited 90-day Warranty

This product is warranted by Innovation One against manufacturing defects in material and workmanship under normal use for ninety (90) days from the date of purchase from authorized Innovation One dealers. For complete warranty details and exclusions, check with your dealer.

Innovation One, Inc.
350 North Henderson Street
Fort Worth, TX 76102

11/04

Printed in China

0105