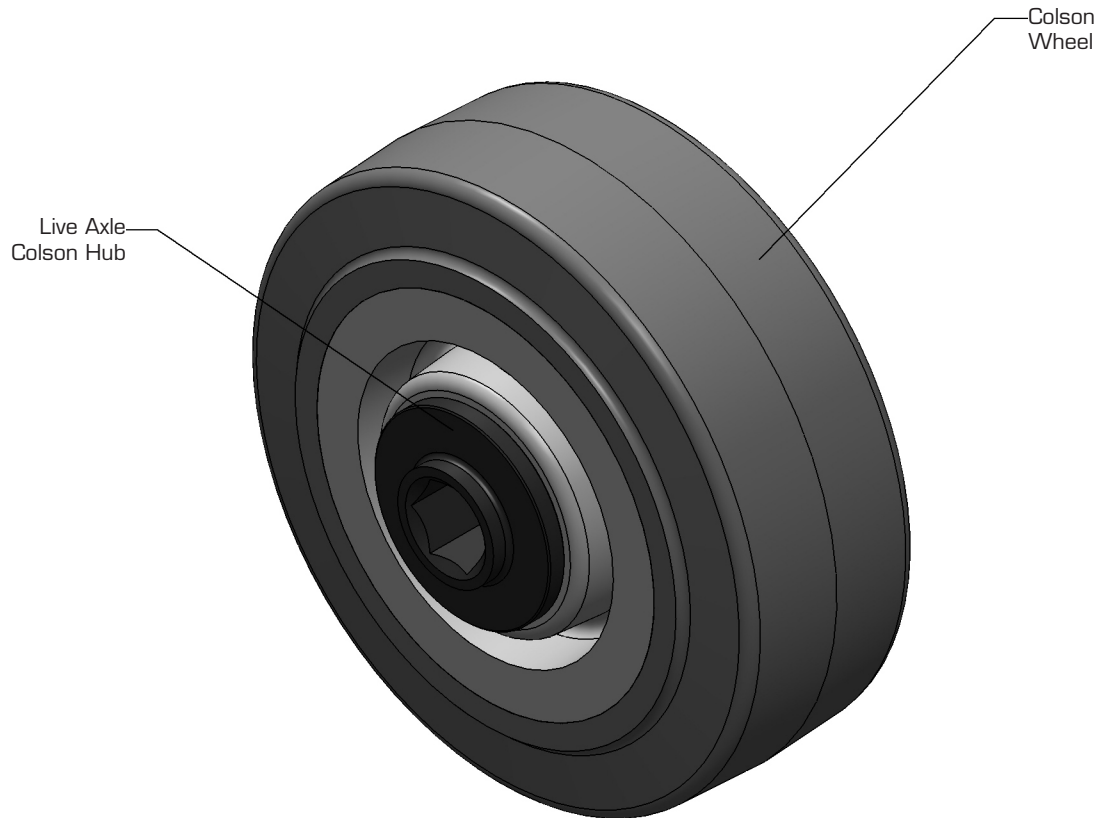


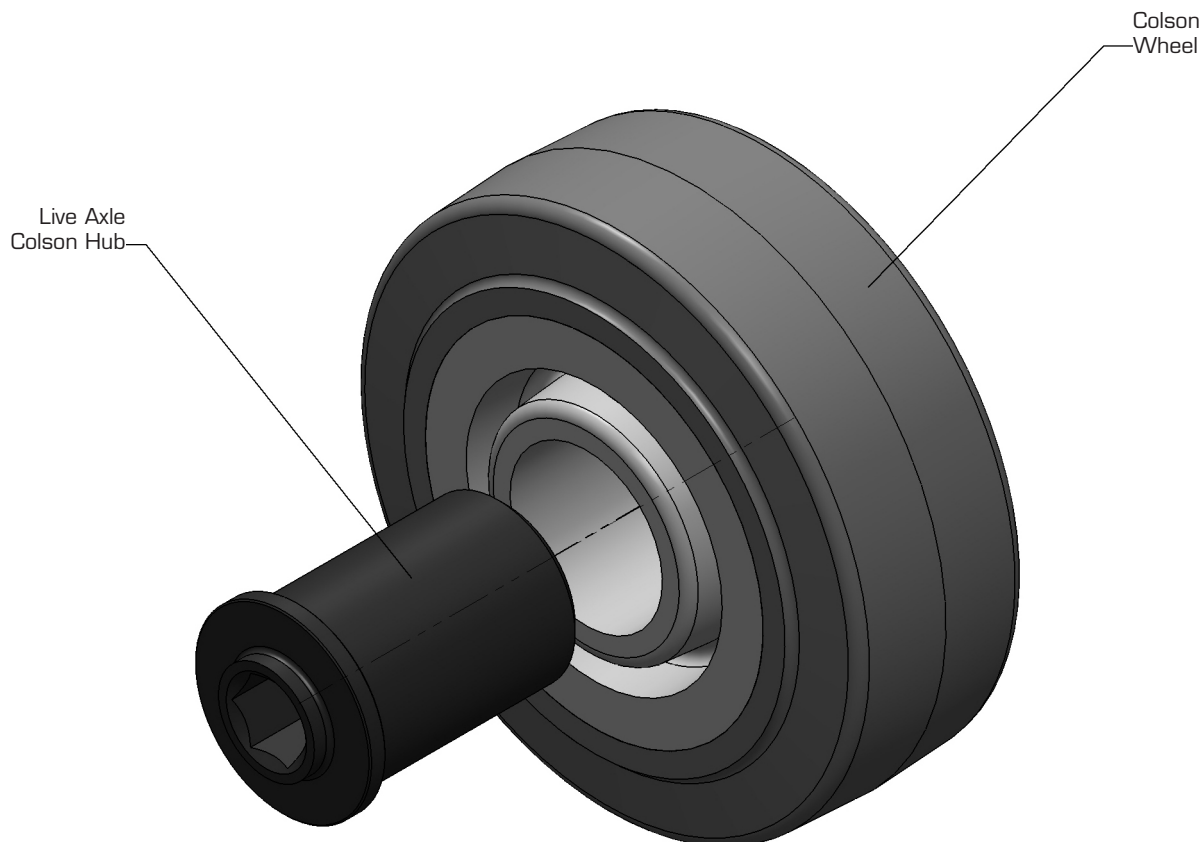
Colson Live Hub

Assembly Guide



Note: The Colson Live Hub is designed to be pressed into the bore of Colson Performa Wheel. There is a .0125" interference fit between the hub and bore of the Colson Wheel. This will require an arbor press or large vise to assemble. It is **NOT** recommended to hammer the hub into the bore, as this can lead to damage and misalignment between the hub and wheel.

Note: The Colson Dead Hub can be used with any Colson Wheel widths that have a 1.1875 bore, such as 1", 1.5" and 2". If using a wheel width other than 1.5", the hub may stick out of the wheel, or be recessed inside the bore.



Step 1:

Position the Colson Live Hub and Colson Wheel as shown. There is a large chamfer on the Colson Live Hub as noted to assist in alignment. **CAUTION: while the chamfer will self-align the hub to wheel during assembly, gross misalignments may not be self aligned.**

Using an arbor press or large vise, apply pressure the assembly to press the hub into the bore. This will take a considerable amount of force. You may also notice some plastic shavings being created and pushed through the bore. This is a normal part of the heavy interference fit used, do not be alarmed.

When the flange of the Colson Live Hub is flush with the edge of the wheel, the assembly is complete. The Colson Wheel assembly is now ready for use.