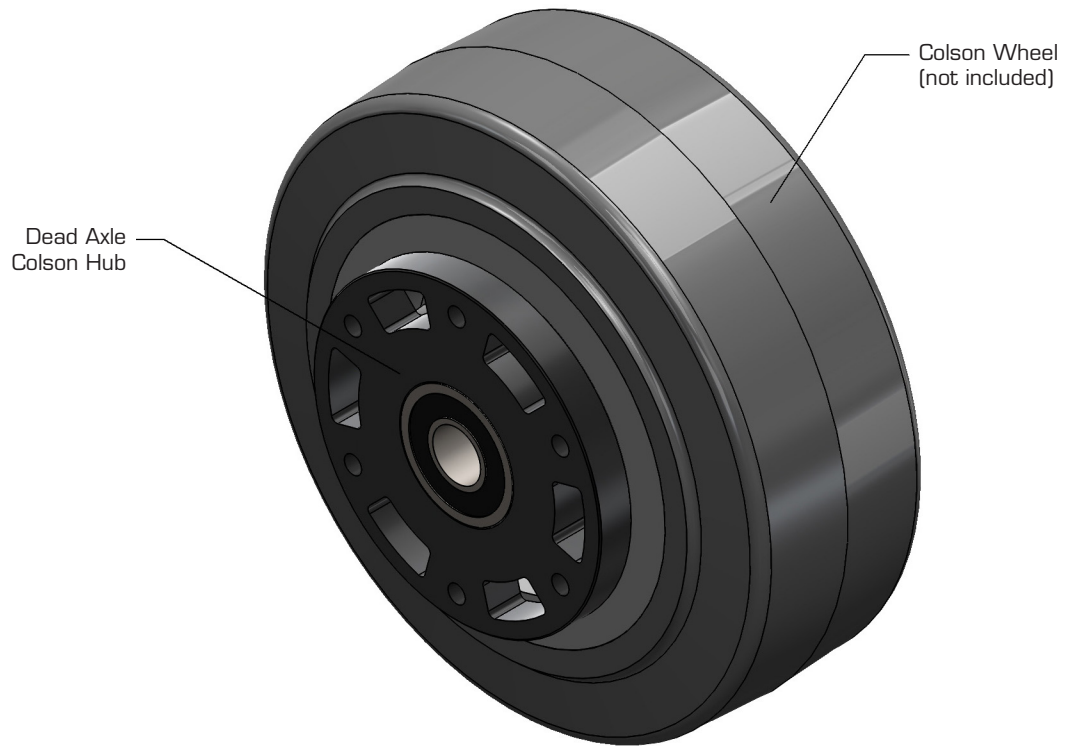


Colson Dead Hub

Assembly Guide



The Colson Dead Hub is designed to be pressed into the bore of the Colson Performa Wheel. There is a .0125" interference fit between the hub and bore of the Colson Wheel. This will require an arbor press, or large vise to assemble. It is **NOT** recommended to hammer the hub into the bore, as this can lead to damage and misalignment between the hub and wheel.

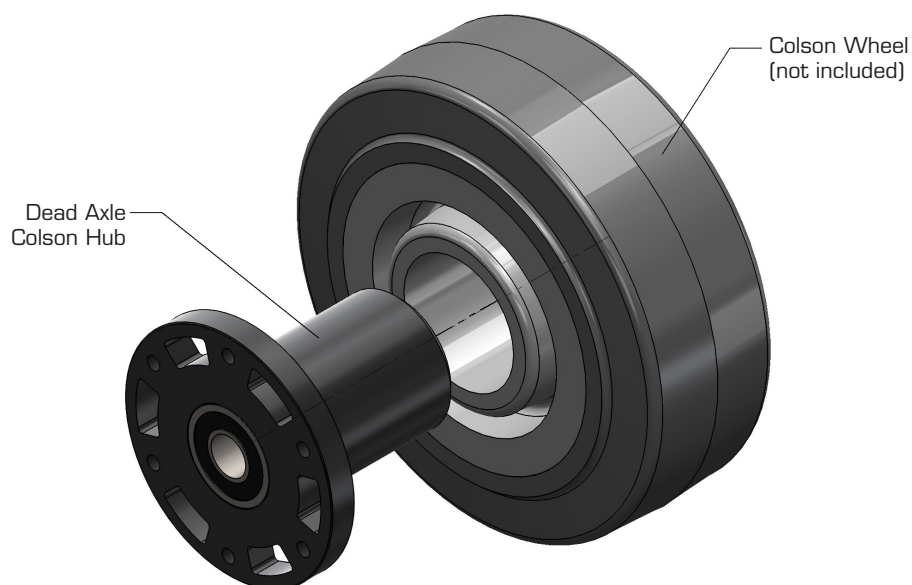
Note: The Colson Dead Hub can be used with any Colson Wheel widths that have a 1.1875" bore, such as 1", 1.5", and 2". If using a wheel width other than 1.5", the hub may stick out of the wheel or be recessed inside the bore.



Step 1:

Insert (2X) 7/8" OD bearings into the counterbores, as shown. This may require a light press.

Note: The Colson Dead Hub can accept both flanged and non-flanged bearings.



Step 2:

Position the Colson Dead Hub and Colson Wheel as shown. There is a large chamfer on the Colson Dead Hub as noted to assist in alignment. **CAUTION while the chamfer will help self-align the hub to wheel during assembly, large misalignments may not be completely corrected.**

Using an arbor press or large vise, apply pressure to the assembly to press the hub into the bore. This will take a considerable amount of force. You may also notice some plastic shavings being created and pushed through the bore. This is a normal part of the heavy interference fit used, do not be alarmed.

When the flange of the Colson Dead Hub is flush with the edge of the wheel, the assembly is complete. The Colson Wheel assembly is now ready for use.

Just press it all the way in, and you're ready to go!