

In addition to all the unique features of our standard PP75 Powerpoles®, we offer a "Locking" version. The locking clips insure that the connector dovetails are attached securely without roll pins, which are required to secure other Powerpole® assemblies. Like our standard Powerpole® housing, the locking PP75 also offers a 600 Volts continuous, AC or DC operation. Wire sizes range from #6 to #16 AWG (13.3 to 1.3 mm²). The locking PP75 utilizes the same contacts and crimp tooling as our standard PP75 housing.

FEATURES

- **Locking dovetail design**

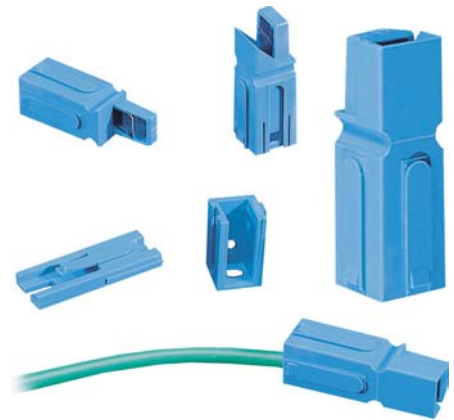
Provides positive mechanical spring latch, creating lockable/unlockable modules

- **Horizontal/Vertical mounting wings or surface adaptor**

Eliminates retaining pins, allows horizontal, vertical or direct mounting capability

- **Molded-in dovetails**

Securely locks modules into multipole configurations



PRODUCT SPECIFICATIONS

Connector Model	PP75	Connector Model	PP75
UL Current Rating (Amperes)*	75****	Life	
UL Voltage Ratings (Volts)**	600*	a. No load (Contact/Disconnect Cycles)	To 10,000
Contact Barrel Wire Size (AWG)	#6 to #16	b. Under Load (Hot Plug 250 cycles @ 120V)	50A
(mm)	13.3 to 1.3	Avg. Connection/Disconnect (lbs)	7
Maximum Wire Insulation Diameter (inches)	0.437	Operating Temperature Range °C***	-20° to 105°
(mm)	11.10	Flammability Rating of Housing Material	UL94 V-0
AVG Contact Resistance* (micro-ohms)	200		
Insulation Withstanding Test Voltage (Volts AC/DC)	2200		
Contact Retention Force (lbs)	50		

* UL Rated for 65°C rated wire or cable size
** Both AC & DC Voltage
*** Contact factory for higher temperature rated connectors
**** For 75°C rated wire or cable size

ORDERING INFORMATION

Housing Only

Part Number	Description
75LOKBLU	Blue housing
75LOK45BLU	45° locking housing
75LOK90BLU	90° locking housing

When ordering additional colors, replace the last 3 letters to reflect your color preference: Black - BLK; White - WHT; Green - GRN; Red - RED

75 amp Contacts

Part Number	Description	Wire	
		AWG	sq. mm
1307	Individual-low detent	#6	13.3
5900	Individual-high detent	#6	13.3

contacts continued

Part Number	Description	Wire	
		AWG	sq. mm
5914	Individual-high detent	#10	5.26
5915	Individual-high detent	#10/12	5.26/3.31
5952	Individual-high detent	#8	8.37
5953	Individual-low detent	#10	5.26
265G1	Reel-high detent-silver	#6/8	13.3/8.37
265G2*	Reel-high detent-silver	#10/12	5.26/3.31
265G3	Reel-low detent-silver	#6/8	13.3/8.37
265G4*	Reel-low detent-silver	#10/12	5.26/3.31
265G5	Reel-high detent-tin	#6/8	13.3/8.37
265G6**	Reel-high detent-tin	#10/12	5.26/3.31
265G7	Reel-low detent-tin	#6/8	13.3/8.37
265G8**	Reel-low detent-tin	#10/12	5.26/3.31

* Using 10/12 AWG wire reduces rating to 50 amps
** Using 10/12 AWG wire reduces rating to 40 amps

Accessories

Part Number	Description
1463G1	2 & 4 pole mounting clamp set
1463G2	3 & 6 pole mounting clamp set
75LOKSMTBLU	Surface mounting pad
75LOKWNGBLU	Mounting wing

Bushings

Part Number	Wire	
	AWG	sq. mm
Use with 5900 or 1307		
5910	#6 to #10/12	5.3/5.26 & 3.31
5912	#6 to #8	5.3/8.37
5913	#6 to #14/16	5.3/2.08 & 1.31

...continued on back page

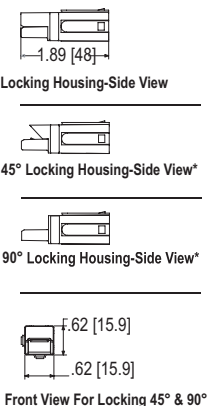
ORDERING INFORMATION

Tooling

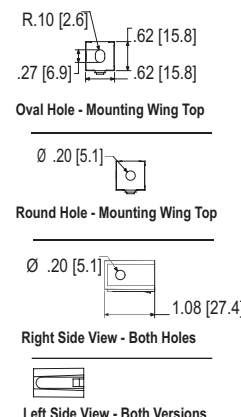
Part Number	Description
1309G4	Hand tool - #16 to #6
1387G1	Pneumatic tool
1388G6	- die for #16 to #6 AWG
1388G7	- die for #10 to #12 AWG (5914, 5915 & 5953 contacts)
1389G6	- locator for #16 to #6 AWG
1389G7	- locator for #10 to #12 AWG (5914, 5915 & 5953 contacts)
260G16	Applicator only (110V & 220V)
284G1	Applicator & Press (220V, 50Hz)
250G5	Press only (110V, 60Hz)

DIMENSIONS

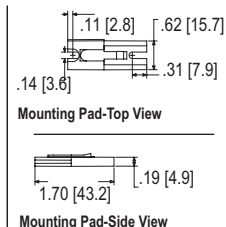
Housings



Mounting Wings



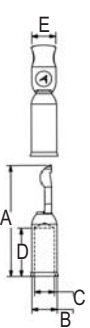
Surface Mount Pad



* Not For Live Use

Contacts

Part Number	-A-		-B-		-C-		-D-		-E-	
	mm	in.	mm	in.	mm	in.	mm	in.	mm	in.
1307	30.22	1.19	11.43	.45	7.11	.28	5.60	.22	7.11	.28
5900	30.22	1.19	11.43	.45	7.11	.28	5.60	.22	7.11	.28
5914	29.72	1.17	11.43	.45	4.83	.19	3.55	.14	7.11	.28
5915	29.46	1.16	11.43	.45	7.11	.28	3.55	.14	7.11	.28
5952	29.46	1.16	11.43	.45	7.11	.28	4.83	.19	7.11	.28
5953	28.70	1.13	11.43	.45	7.11	.28	3.55	.14	7.11	.28
265G1	32.26	1.27	9.53	.375	9.14	.36	N/A		7.98	.314
265G2	32.26	1.27	9.53	.375	7.37	.29	N/A		7.98	.314
265G3	30.86	1.215	9.53	.375	9.14	.36	N/A		7.98	.314
265G4	30.86	1.215	9.53	.375	7.37	.29	N/A		7.98	.314
265G5	32.26	1.27	9.53	.375	9.14	.36	N/A		7.98	.314
265G6	32.26	1.27	9.53	.375	7.37	.29	N/A		7.98	.314
265G7	30.86	1.215	9.53	.375	9.14	.36	N/A		7.98	.314
265G8	30.86	1.215	9.53	.375	7.37	.29	N/A		7.98	.314

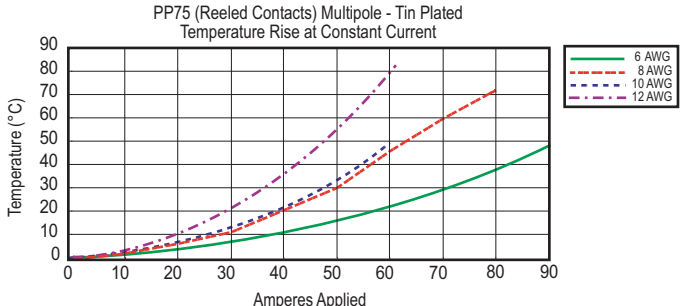
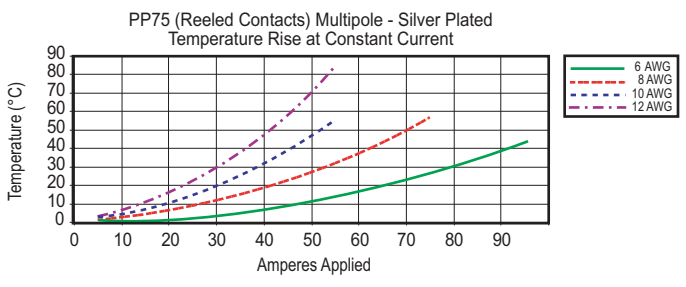
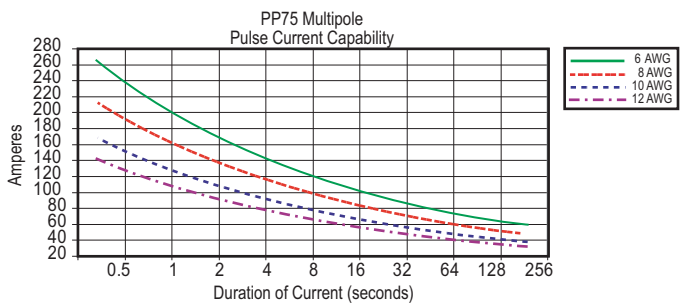
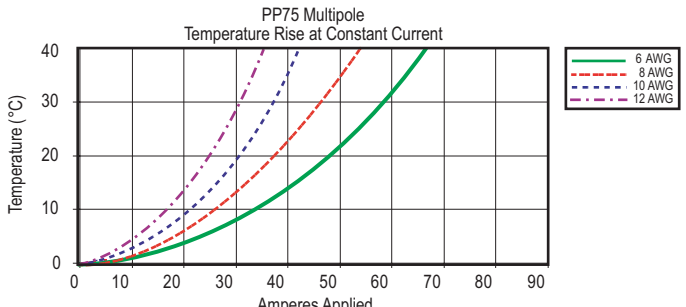
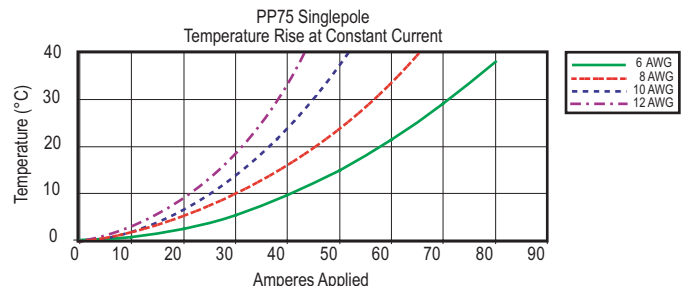


Bushings - (for use with 5900 or 1307)

Part Number	Reduces From	-A-		-B-		-C-	
		mm	in.	mm	in.	mm	in.
5910	#6 to #10-12 AWG	11.94	.47	5.41	.213	3.45	.136
5912	#6 to #8 AWG	11.43	.45	5.41	.213	4.57	.18
5913	#6 to #14-16 AWG	11.94	.47	5.41	.213	2.36	.093



TEMPERATURE RISE CHARTS



CSA Certified
File No. LR25154



UL Recognized
File No. E26226

All Data Subject To Change Without Notice

DS-PP75LOK REV01