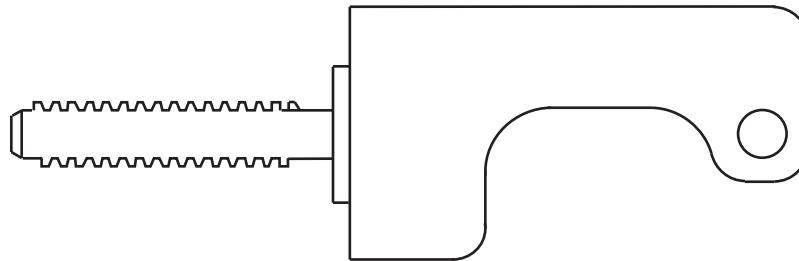
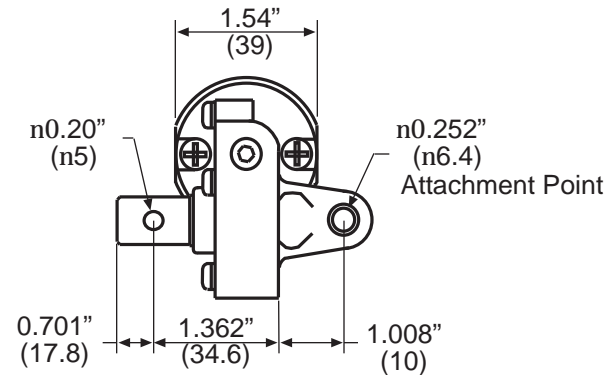
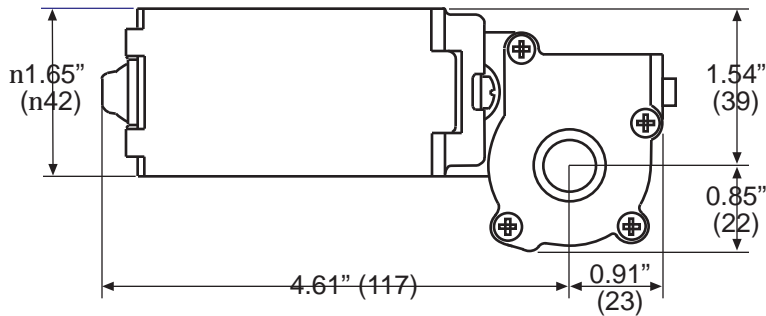
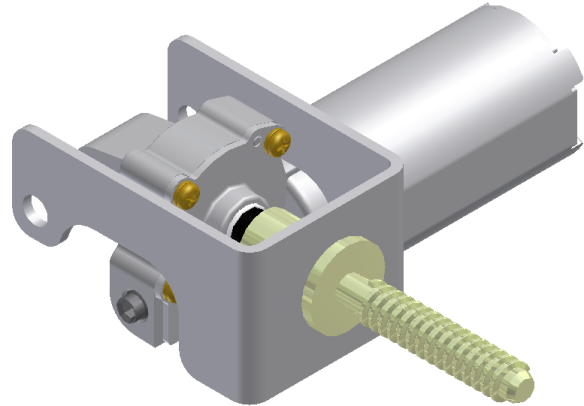


amequipment.com
Phone: (541) 327-1546
FAX: (541) 327-1548

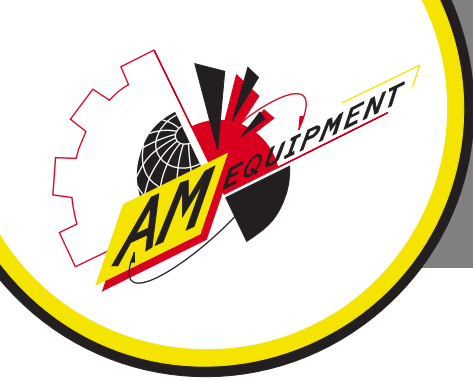
206 series motor

206-1005

- 6Nm stall torque actuator motor, LH
- Water resistant
- Weighs 1.2 pounds



This motor was not designed to be used as an acme thread actuator. The gear housing was not designed to withstand large impact or axial loading. This motor should be outfitted with a bracket, such as the one shown, and the acme thread should have a flange, such as the one shown, so that the load is transferred from the acme thread to the bracket.

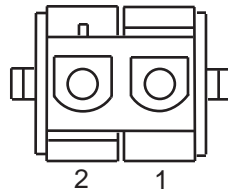


amequipment.com
Phone: (541) 327-1546
FAX: (541) 327-1548

206 series motor

206-1005

Motor Connector



- 1) AMP cap housing P/N 1-480699-0
 - 2) AMP female terminal P/N 350923-3
- CW Shaft Rotation Pin 1: 12V DC / Pin 2: Ground
CCW Shaft Rotation Pin 2: 12V DC / Pin 1: Ground
Mating Terminal: 350922-3
Mating Plug: 1-480698-0

Clockwise Motor Shaft Rotation		
Data Point	Data Type	Value Range
No Load	Current (A)	3.4 - 2.7
	Speed (rpm)	161 - 132
Stall Load	Torque (Nm)	6.0 Min
	Current (A)	22.7 - 18.6
Peak Power	Power (W)	29.3 - 24.0
	Torque (Nm)	3.9 - 3.2
Nominal (Peak Efficiency)	Power (W)	21.5 nominal
	Speed (rpm)	115 nominal
	Current (A)	6.5 nominal
	Torque (Nm)	1.8 nominal
Counter-Clockwise Motor Shaft Rotation		
Data Point	Data Type	Value Range
No Load	Current (A)	2.9 - 2.3
	Speed (rpm)	167 - 136
Stall Load	Torque (Nm)	6.0 Min
	Current (A)	22.1 - 18.1
Peak Power	Power (W)	29.7 - 24.3
	Torque (Nm)	3.6 - 2.9
Nominal (Peak Efficiency)	Power (W)	19.8 nominal
	Speed (rpm)	119 nominal
	Current (A)	6.0 nominal
	Torque (Nm)	1.6 nominal

