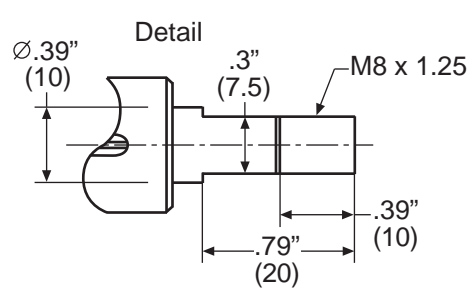
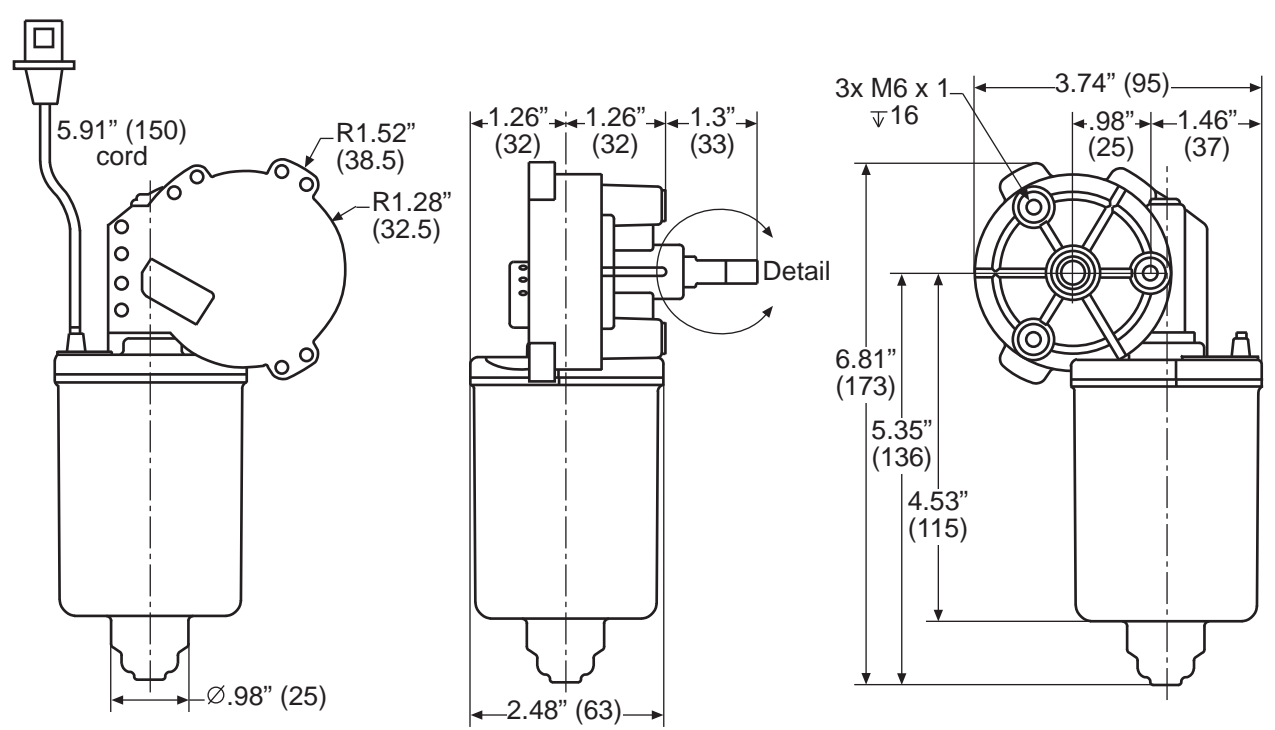
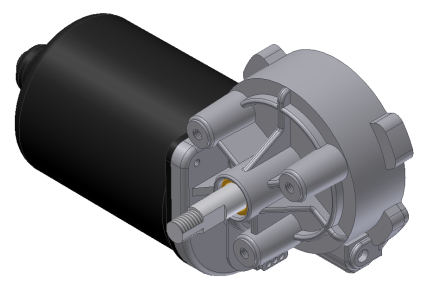


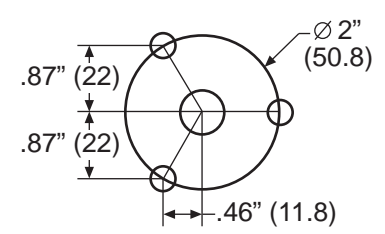
amequipment.com
 Phone: (541) 327-1546
 FAX: (541) 327-1548

224 series motor

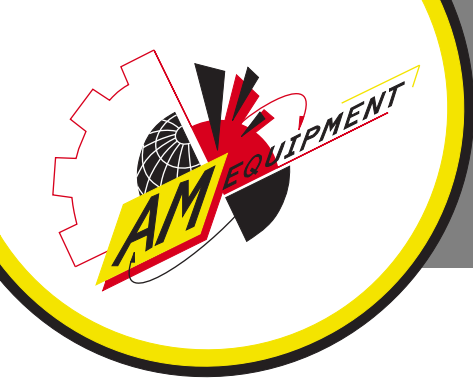
- 224-1100**
- 24Nm stall torque actuator motor, LH
 - 12V reversible
 - Water resistant
 - For use with gears, sprockets, and drives
 - Weighs 2.25 pounds



Mounting bolt: 414-1131
 Mate nut: 414-1132



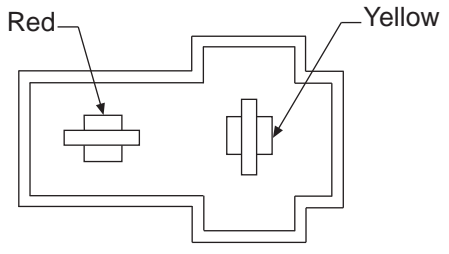
Mounting pattern



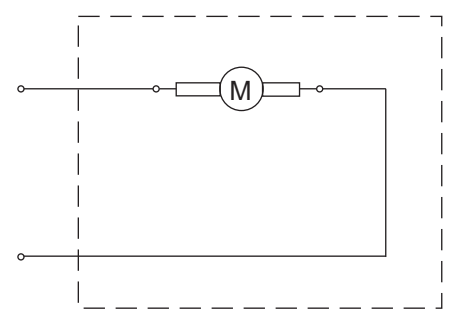
amequipment.com
Phone: (541) 327-1546
FAX: (541) 327-1548

224 series motor

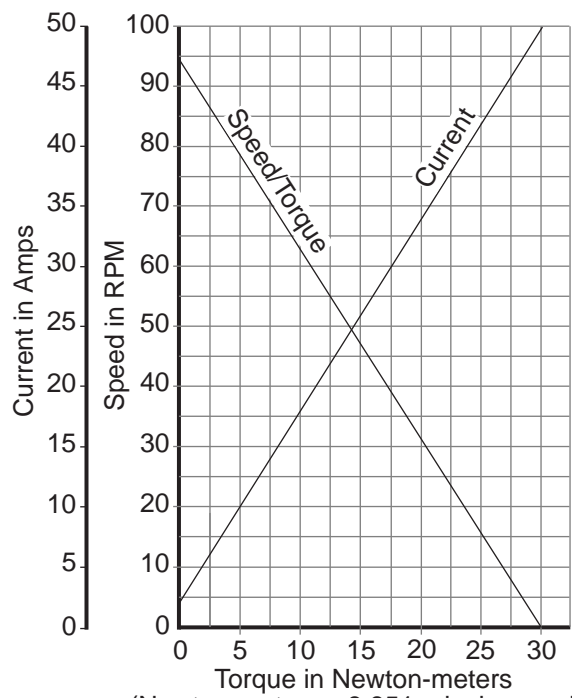
224-1100



Terminal housing: 317-1057
Terminal: 317-1054
Mate terminal housing: 317-1056
Mate terminal: 317-1055



Red (+), yellow (-) = CW (preferred rotation)
Yellow (+), red (-) = CCW



(Newton-meters x 8.851 = inch pounds)
(Newton-meters x 10.2 = kilogram centimeters)