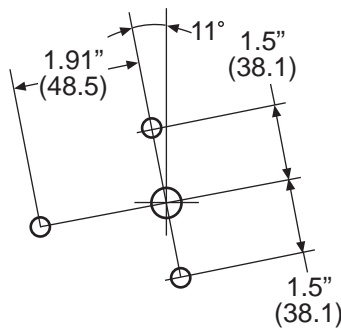
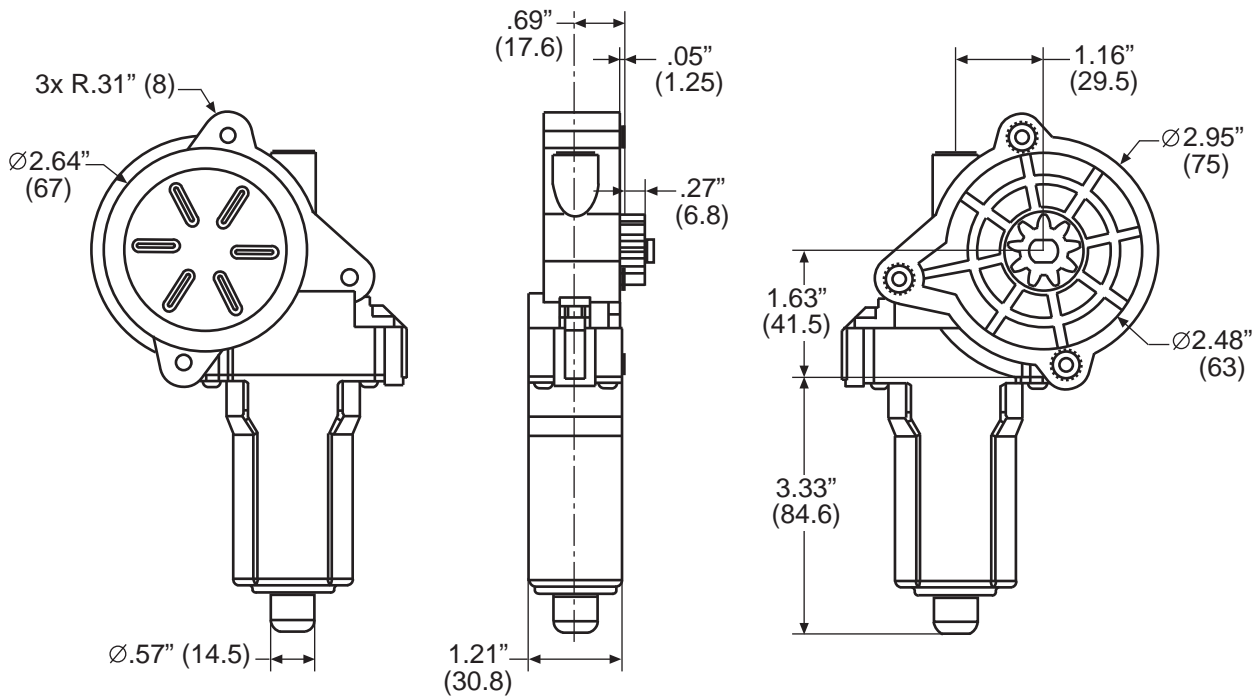
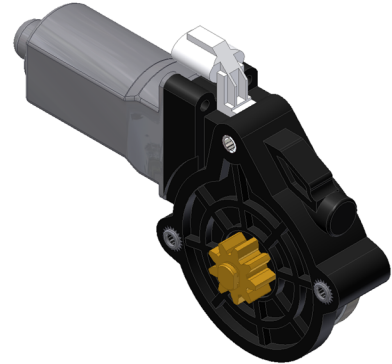


amequipment.com
 Phone: (541) 327-1546
 FAX: (541) 327-1548

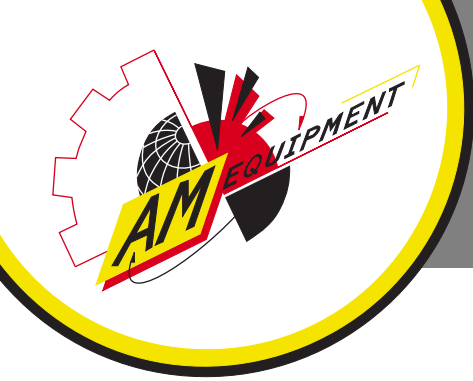
210 series motor

210-1009

- 10Nm stall torque actuator motor, RH
- 12V reversible
- Water resistant
- Weighs 1.3 pounds



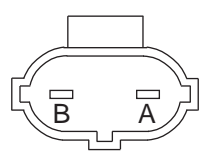
Mounting pattern



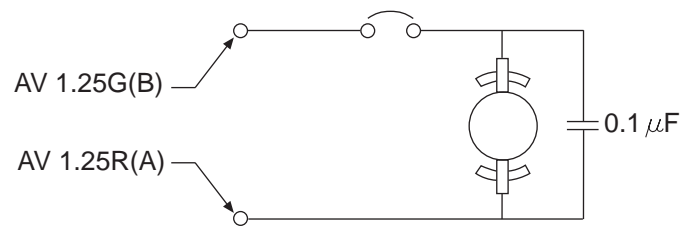
amequipment.com
 Phone: (541) 327-1546
 FAX: (541) 327-1548

210 series motor

210-1009



Mate terminal: 317-1044
 Wire seal: 317-1046
 Mate terminal housing: 317-1058
 Wire retainer: 317-1059



Clockwise Motor Shaft Rotation		
Data Point	Data Type	Value Range
No Load	Current (A)	3.5 - 2.9
	Speed (rpm)	108.0 - 88.5
Stall Load	Torque (Nm)	11.2 - 9.2
	Current (A)	26.9 - 22.0
Peak Power	Power (W)	29.1 - 23.8
	Torque (Nm)	6.1 - 4.9
Nominal (Peak Efficiency)	Power (W)	21.2 nominal
	Speed (rpm)	67.4 nominal
	Current (A)	8.8 nominal
	Torque (Nm)	3.1 nominal
Counter-Clockwise Motor Shaft Rotation		
Data Point	Data Type	Value Range
No Load	Current (A)	3.8 - 3.0
	Speed (rpm)	106.2 - 86.9
Stall Load	Torque (Nm)	11.0 - 9.0
	Current (A)	28.0 - 22.9
Peak Power	Power (W)	30.9 - 25.3
	Torque (Nm)	5.6 - 4.6
Nominal (Peak Efficiency)	Power (W)	24.2 nominal
	Speed (rpm)	70.1 nominal
	Current (A)	9.2 nominal
	Torque (Nm)	3.4 nominal

